

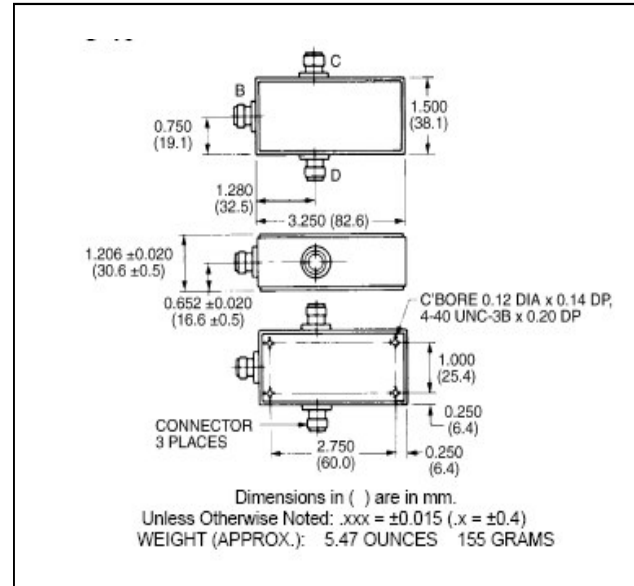
**180° Two-Way Power Divider,
5 - 1000 MHz**

**H-81-4
V2**

Features

- Broadband Frequency Range
- Low Loss - Less Than 1.3 dB Max
- VSWR - 1.4:1 Max

C-19



Guaranteed Specifications: From -55°C to +85°C

Frequency Range		5-1000 MHz
Insertion Loss (less coupling)	5-100 MHz	0.7 dB Max
	100 -1000 MHz	1.4 dB Max
Isolation	5-100 MHz	20 dB Min
	100 -1000 MHz	25 dB Min
Amplitude Balance	5-100 MHz	0.2 dB Max
	100 -1000 MHz	0.5 dB Max
VSWR (All Ports)		1.4:1 Max
Phase Balance	5-100 MHz	5° Max
	100 -1000 MHz	2.5° Max

Operating Characteristics

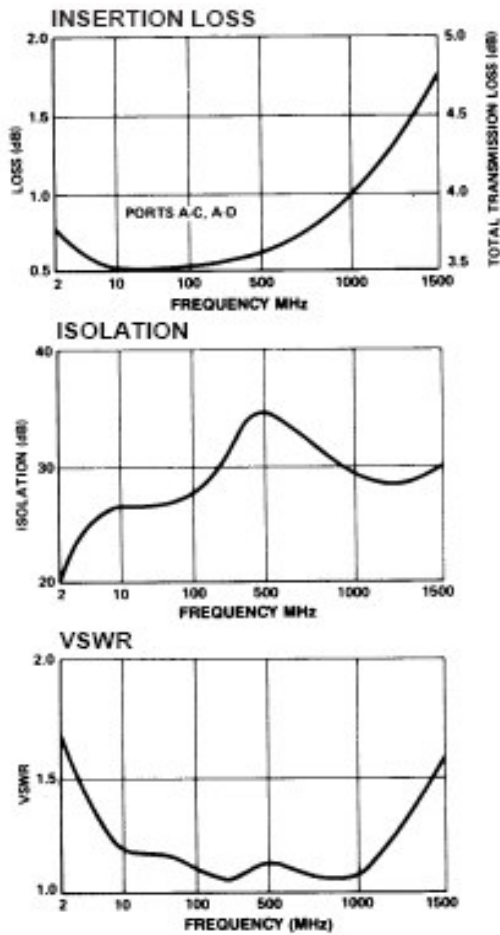
Parameter	Absolute Maximum
Impedance	50 Ohms Nominal
Maximum Power Rating Or Input Power	2.0 Watt Max
Internal Load Dissipation	0.5 Watt Max
Environmental	

* All specifications apply with 50 ohm source and load impedance.

**180° Two-Way Power Divider,
5 - 1000 MHz**

**H-81-4
V2**

Typical Performance Curves



Ordering Information

Part Number	Package
H-81-4 N	Connectorized
H-81-4 SMA	Connectorized
H-81-4 TNC	Connectorized
H-81-4 BNC	Connectorized

Functional Diagram

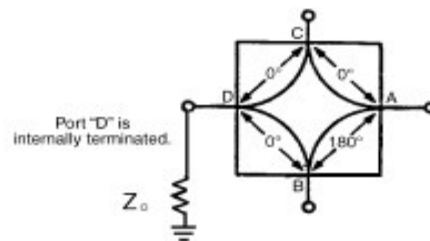


Figure 1. 2-way, In-Phase (180°) Power Divider/Summer, or ISO-T